



# DecoCRETE



**DECORATIVE CONCRETE PRODUCTS GUIDE**



# TABLE OF CONTENTS

CONCRETE STAMPS

FORM LINERS

TOOLS

SEALERS

EXPOSED AGGREGATE

CONCRETE STAIN

CONCRETE COLORANTS

SOLVENTS AND CLEANERS

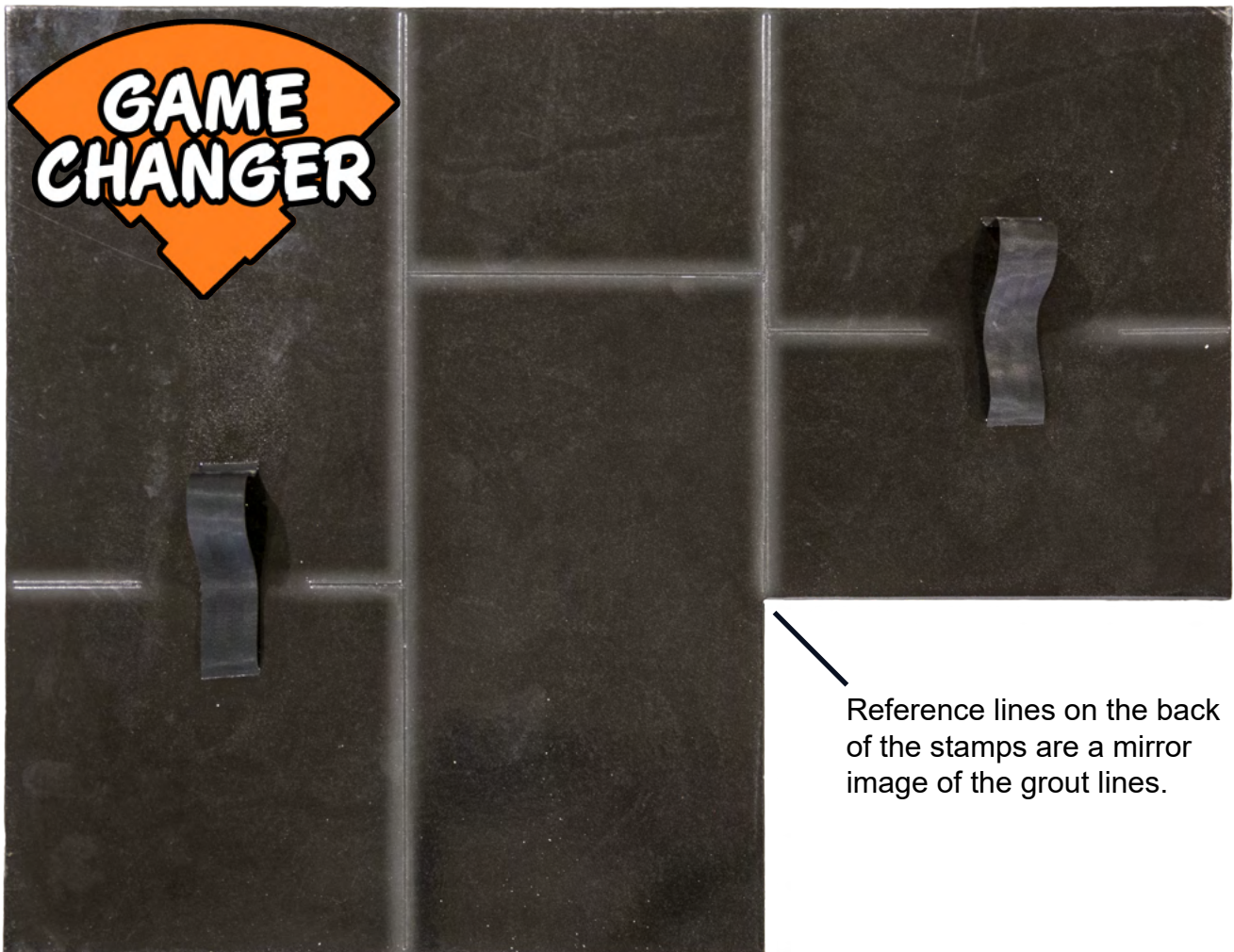
EXTRAS AND ADDITIVES

BAG MIXES

FLOOR COATINGS

*“Concrete is hard enough the way it is.  
Finding the support you need shouldn’t be.”*

## ■ Deco-Crete Stamps



- Mirror grout lines on the back make it easy to align stamps accurately for seamless patterns.
- Ensures uniform grout line placement across the slab.
- Speeds up the stamping process by simplifying placement.
- Reduces the risk of misaligned patterns or gaps.
- Makes stamping more accessible for beginners.
- Ensures clean, cohesive grout line appearances.
- Helps avoid costly mistakes during stamping.
- Minimizes rework and adjustments.



## Avalon Ashlar



The Avalon Ashlar pattern by Deco-Crete brings a realistic stone texture to new concrete. Inspired by exotic textures from India, it offers a unique twist on a classic stamped concrete pattern. The stamps can be rotated for a random effect, with reference lines on the back that mirror the grout lines. The varied stone sizes make it versatile for any project, and each of the three stamps has distinct grout lines for a natural, random appearance. Suitable for fresh concrete or stampable overlays.

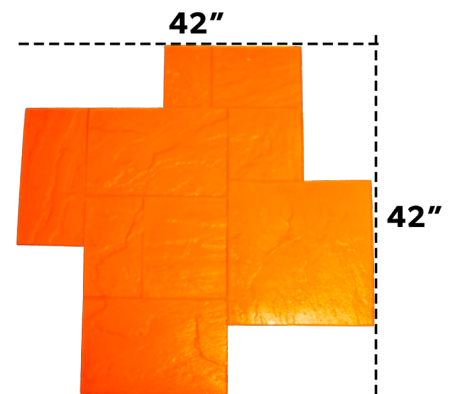
### STAMPS

- (3) Gray Stamp
- (3) Black Stamp
- (3) Orange Stamp
- (1) Floppy Stamp



### ACCESSORIES

- (1) Texture Skin



## Castle Rock



The Castle Rock pattern from Deco-Crete offers a realistic, random stone texture with an old-world charm. Each of the four unique stamps ensures a varied look, while the reference lines on the back mirror the grout lines below. Ideal for freshly placed concrete or stampable overlays, this pattern creates a timeless stone appearance. Deco-Crete recommends using the Ancient Stone texture skins as touch-up tools for best results.

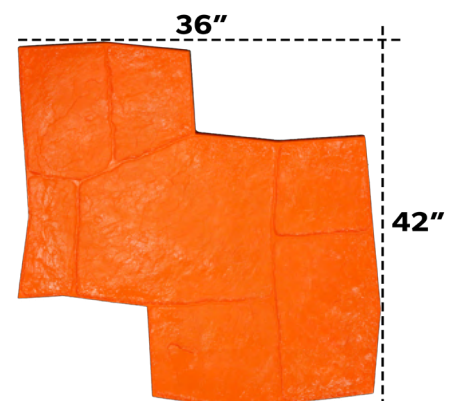
### STAMPS

- (3) Gray Stamp
- (3) Black Stamp
- (3) Orange Stamp
- (3) Red Stamp
- (1) Floppy Stamp



### ACCESSORIES

- (1) Texture Skin



## Blackstone Ashlar



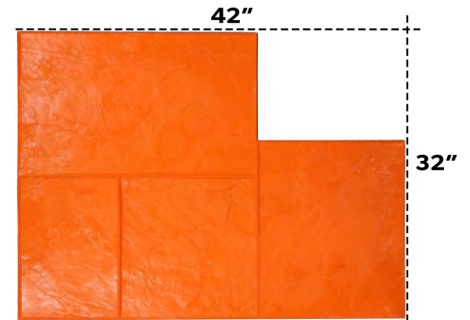
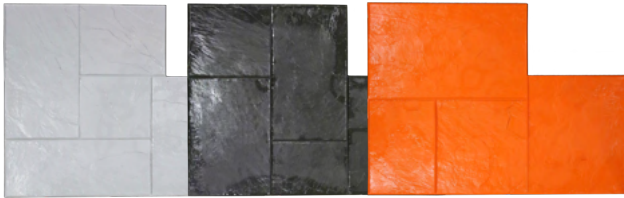
The Blackstone Ashlar pattern from Deco-Crete offers a realistic, fractured slate texture ideal for any project size. It features an L-shaped ashlar design with varied stone sizes, and each of the three stamps has unique grout lines to ensure a random look. Reference lines on the stamps match the grout lines for easy alignment. Suitable for fresh concrete or overlays, Deco-Crete recommends using Sienna Slate texture skins for touch-ups.

### STAMPS

- (3) Gray Stamp
- (3) Black Stamp
- (3) Orange Stamp
- (1) Floppy Stamp

### ACCESSORIES

- (1) Texture Skin



## Large Castle Rock



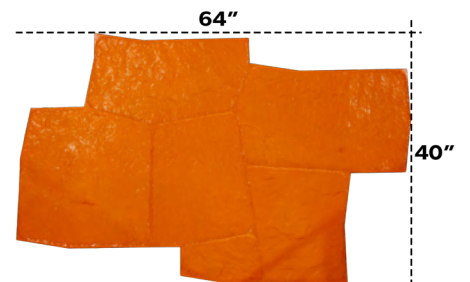
The Large Castle Rock pattern from Deco-Crete features stones that are 30-40% bigger than the standard version, offering the same great texture in a more time-efficient format for large areas. This L-shaped design includes three unique stamps with varying grout line patterns to create a random look. Suitable for fresh concrete or overlays, the stamps are easy to align with reference lines that mirror the grout lines. Deco-Crete suggests using Ancient Stone texture skins for touch-ups on this pattern.

### STAMPS

- (2) Gray Stamp
- (2) Black Stamp
- (2) Orange Stamp
- (1) Floppy Stamp

### ACCESSORIES

- (1) Texture Skin



## Rustic Barnwood Plank



The Rustic Barnwood Plank Stamp pattern from Deco-Crete recreates the look of an authentic wooden barn floor on new concrete. Inspired by the 1800s barn floorboards, these 16" wide plank stamps feature unique textures for a natural, random appearance across slabs. Ideal for projects of any size, they work on both fresh concrete and stampable overlays. The set includes touch-up skins with and without grout lines for added versatility.

### STAMPS

- (2) Gray Stamp
- (2) Black Stamp
- (2) Orange Stamp
- (2) Red Stamp
- (1) 6.5' Stamp
- (1) 4' Stamp

### ACCESSORIES

- (1) Texture Skin
- (1) Grout line Skin



## Desert Flagstone



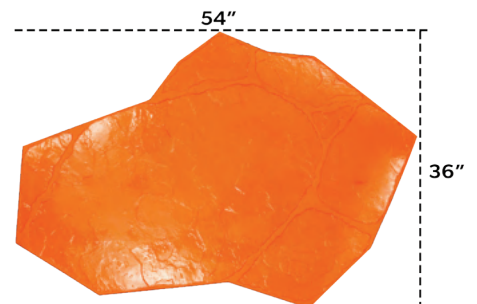
The Desert Flagstone stamps from Deco-Crete bring the timeless beauty of the southwest desert to your concrete projects. Inspired by the textures of the Sandia Mountains, these stamps create a truly realistic flagstone pattern. The set includes four interlocking stamps, each with its own distinct grout line pattern, ensuring the most random and authentic flagstone look on the market. Reference lines on the back align perfectly with the grout lines on the bottom, simplifying the stamping process. With a variety of stone sizes in the pattern, Desert Flagstone is versatile enough for projects both large and small. Designed for use on freshly placed concrete or stampable overlays.

### STAMPS

- (2) Gray Stamp
- (2) Black Stamp
- (2) Orange Stamp
- (2) Red Stamp
- (1) Floppy Stamp

### ACCESSORIES

- (1) Texture Skin



## Ancient Stone



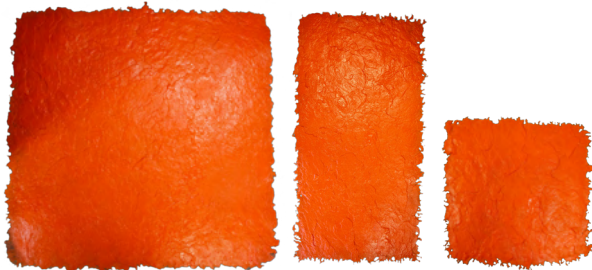
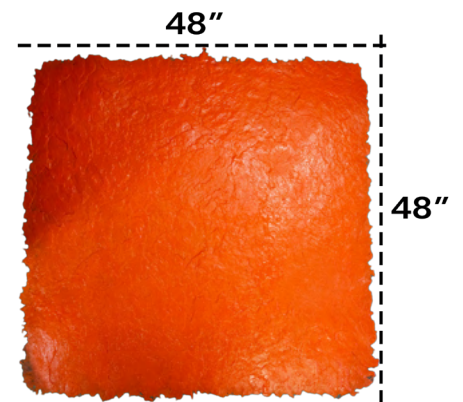
The Ancient Stone Seamless Stamps from Deco-Crete create a natural stone texture on new concrete, inspired by rock formations in Pennsylvania. These stamps can be rotated to achieve a random look and come with handles for easy placement. Ideal for fresh concrete or overlays, Deco-Crete recommends using the Shock Stopper Tamper with these stamps for optimal results.

### STAMPS

- (4) Large
- (1) Half

### ACCESSORIES

- (1) Texture Skin



## Sienna Slate



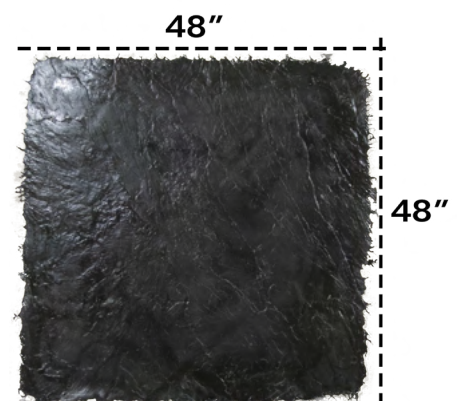
The Sienna Slate Seamless Stamps from Deco-Crete offer a new fractured slate texture for the season. Designed for flexibility, these 48" x 48" and 48" x 24" skins can be rotated to create a random texture on freshly poured concrete or overlays. Equipped with handles for easy use, Deco-Crete suggests pairing them with the Shock Stopper tamper for optimal results.

### STAMPS

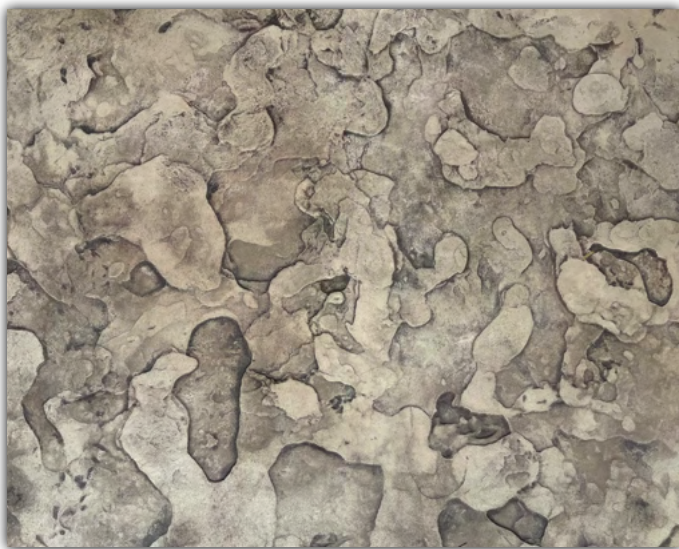
- (4) Large
- (1) Half

### ACCESSORIES

- (1) Texture Skin



## Sandia Stone



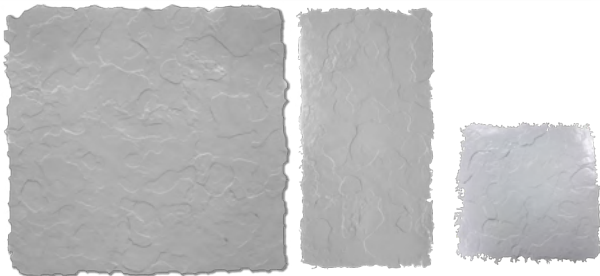
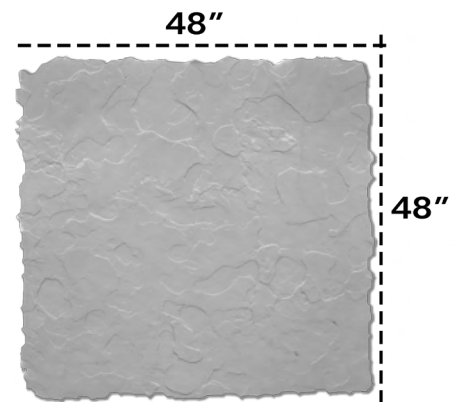
With the Deco-Crete Sandia Stone Seamless Texture Stamps, you can easily achieve unique, natural stone textures and elevate your decorative concrete projects! This premium design was inspired by the rugged beauty of New Mexico's Sandia Mountains. This 2025 release is engineered for contractors and DIYers looking to create realistic, one-of-a-kind stone textures on freshly poured concrete or overlays.

**STAMPS**

- (4) Large
- (1) Half

**ACCESSORIES**

- (1) Texture Skin



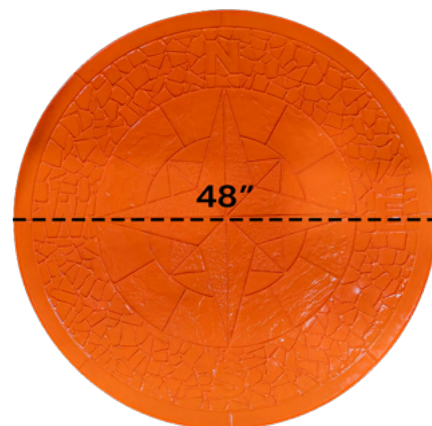
## Mosaic Compass



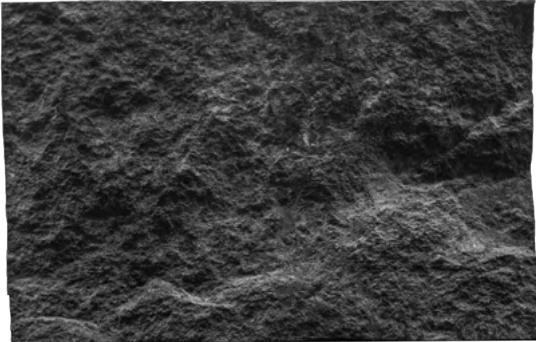
The Mosaic Compass Stamp from Deco-Crete features a 48" diameter design perfect for a variety of projects like patios and driveways. It includes a 7" wide mosaic band and 4" tall letters marking the four directions, all set within slate-textured stones. Handles and reference lines on the back ensure easy placement. This stamp is versatile, working well on both new concrete and concrete overlays.

**STAMPS**

- (1) Orange Stamp



## 7.25" Split Limestone Liner



Size: 8' x 7.25"

- Heavy hand chiseled step insert.
- They can easily be joined for a longer spread.
- Excellent for making landscape stones.
- 1"+ thick with up to 1" profile.

---

## 7.25" Cantilever Split Limestone Liner

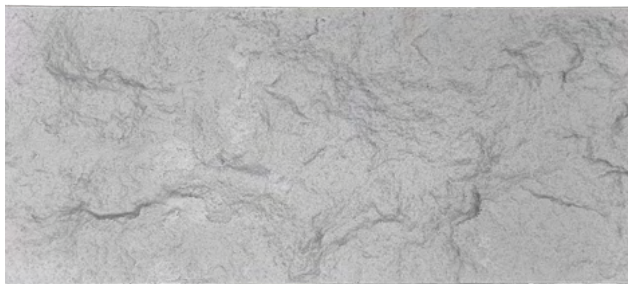


Size: 8' x 7.25"

- Create a 2" edge that overhangs a 5.25" base.
- One piece.
- Liner is approximately 1-5/8" thick.

---

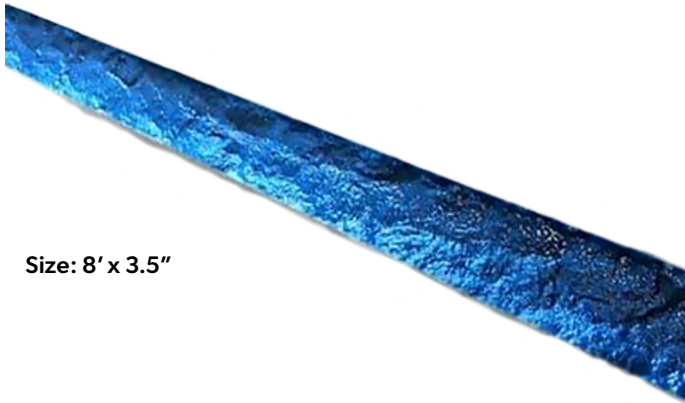
## 5.5" Split Limestone Liner



Size: 8' x 5.5"

- Designed to fit common 2" x 6".
- Up to 1.5" of relief.
- Reuse many, many times.
- Seamless when together.

## 3.5" Split Limestone Liner



Size: 8' x 3.5"

- Fits a 2" x 4" piece of wood.
- Up to 3/4" of relief.
- Great for patios, driveways, countertops, seating walls or firepits.

## 2" Standard Split Limestone Liner



Size: 8' x 2"

- Can be joined for continuous runs.
- Very flexible, can be formed at 90-degrees.
- Great for forming up countertops, steps, and wall caps





## Shock Stopper

The Shock Stopper is a revolutionary stamped concrete tamper designed to make concrete stamping easier, faster, and more comfortable. Its innovative spring-loaded handle absorbs impact shock, reducing the need for excessive force and minimizing the risk of blisters and sore arms and shoulders.

**Standard Tamper also available in 12" and 16"**

## Border Buster™



The Border Buster Tamper – a groundbreaking tool crafted for precision and versatility in stamped concrete. The 7" x 15" tamper base is perfect for tackling borders and tight spaces. The innovative 12" detachable handle offers unmatched versatility, allowing positioning in four different horizontal directions and can also be mounted vertically. Adjustments are effortless with the easy-thread hand knob—no tools required! Enhance functionality with the optional attachable texture skin **(sold separately)**, enabling you to tamp and texture all at the same time. Truly one-of-a-kind, the Border Buster Tamper revolutionizes stamped concrete borders.

### BORDER BUSTER





## Touch Up Wheels

Deco-Crete's Touch-Up Wheels are the ultimate tools for perfecting stamped concrete projects. Choose from four options to suit your needs: the Large and Small Chiseled Edge Touch-Up Wheels add a realistic textured effect, while our Groover Touch-Up Wheel delivers a clean and smooth final product. Our Sanded Touch-Up Wheel is ideal for achieving professional-grade sanded texture grout lines. Designed for precision and versatility, these wheels excel in refining border grooves, cleaning up grout lines, and adding detailed touches.

## EZ-Step Forming System

Deco-Crete's EZ-Step Forming System is a revolutionary new product that makes pouring decorative concrete steps easier and more efficient than ever before. The system includes 3 radiused step forms that can be set up quickly and easily in under 5 minutes using the included hardware.



# DECORATIVE SEALER



## D-One

- No bubbles, less callbacks, less hassle.
- Easy to use and long-lasting acrylic and penetrating sealer all in one.
- Formulated to enhance color.
- Superior protection against salt damage, water intrusion, and stains.
- Low VOC Formula to meet EPA AIRM Regulations within most of the U.S. and Canada for concrete curing compounds.
- Coverage: 200-300 square feet per gallon.
- ASTM C309, Type 1, Class A and B
- AASHTO Specification M-148, Type 1 Class A and B



## Deco Matte

- No harsh odors.
- Matting agent for solvent-based acrylic sealer.
- For a satin finish, mix a one-pint container into a 5-gallon pail of solvent-based acrylic sealer.
- For a matte finish, mix two-pint containers into a 5-gallon pail of solvent-based acrylic sealer.
- Size: 1 pint



## Deco Grip

- Finely ground polymer material for addition to concrete sealers for slip resistance and fine texturing.
- Formulated for applications where high chemical and abrasion resistance is needed.
- Can be added to most film-forming coatings.
- Size: 16 oz. Container
- Designed to be mixed into 5 gallons of concrete sealer.
- Available in 40, 60, and 100 grit.

# DECORATIVE SEALER



\*Castle Rock

\*Color Hardener:  
Sandy Brown & Buckskin

\*Release Agent:  
Dark Gray

# DECORATIVE SEALER

## Super Stamp Seal



- A medium gloss, non-yellowing, pure acrylic concrete lacquer style sealer designed for decorative concrete.
- Improved resistance to rain, the sun, freezing temperatures, stains, and other pollutants that sometimes can be hazardous to concrete.
- Coverage: 250 - 350 square feet per gallon.
- Available in 1, 5 and 55 gallons.



## Diamond Shine

- High gloss, UV resistant acrylic copolymer concrete sealer intended as a cure/cure and seal for all types of concrete.
- Improved resistance to rain, sun, freezing temperatures, stains, and other pollutants that sometimes can be hazardous to concrete.
- It can be considered an ultimate multi-use concrete sealer.
- 25% Solids
- 250-350 square feet per gallon.
- Available in 1, 5 and 55 gallons.

Also Available in 30% Solids





## Rejuvenator

- Revitalizes existing sealer without adding more acrylic.
- Fixes sealers affected by unexpected issues.
- Easy to spray and slow drying.
- Bring the shine and color back!
- Works with your sealer, not against it.
- Available in 1, 5, and 55 gallons.



## Sealer Survival Kit

This kit will help you determine if there is sealer on the concrete.

Kit Includes: Testing Solution, Super Stamp Seal, D-One, Rejuvenator, 2" Chip Brush, Pair of Disposable Gloves



## Acrylic Color Pack

- A high solids, concentrated, solvent based acrylic tint system specially formulated for solvent based acrylic sealers like Super Stamp Seal & Diamond Shine.
- A semi-transparent stain or a solid opaque colored finish. Decorative way to seal a variety of concrete substrates.
- Recommended for use on unsealed or untreated warehouse floors, garages, basements, docks, driveways, sidewalks and any other concrete surfaces.
- 32 oz. container.

# PENETRATING SEALER

## D-Shield

- Dual functioning chemical reactive curing compound and water repellent with a low viscosity for better penetration on concrete substrates.
- It will not change the color of the concrete.
- Minimize damage caused by water and salt water from de-icing road salts on freshly poured or existing unsealed concrete.
- Meets cure and seal specifications: ASTM C-309, Type 1, Class A and B, and AASHTO Spec M-148, Type 1, Class A and B
- Coverage: 200 - 300 square feet per gallon
- Available in 1, 5, and 55 gallons



## D-Shield Clear

- Water-based penetrating sealer and water repellent.
- A reactive, penetrating catalyzed silicate solution that fuses within porous substrates of concrete, brick, stone, and mortar to combat freeze/thaw damage, scaling, and spalling and limit penetration of stains and damaging impurities such as oil, gas, grease, and salt.
- It reduces water absorption into the substrate, reduces spalling due to freeze/thaw and efflorescence, and increases the substrate's life.
- Minimizes damage due to water and salt water from de-icing road salts and saltwater pool systems.
- Excellent penetration and adhesion to clean, unsealed new concrete.
- Will not change the color of the concrete.
- Recommended for interior and exterior, concrete pool decks, concrete parking lots, sidewalks, patios and stoops, smooth troweled concrete, broom finish concrete, and most other new concrete surfaces where water and salt damaged resistance is required.
- Coverage: 250 - 350 square feet per gallon.
- Available in 5- or 55-gallon containers





## DecoBlock

- A 7.5% active water-based siloxane/silane water repellent and impregnating agent for porous masonry surfaces such as concrete, block, brick, and unglazed tile.
- Excellent resistance to mold, mildew, and fungus.
- Excellent Water Repellency
- Provides natural look
- Available in 5 and 55-gallons
- Coverage: 100 - 300 square feet per gallon

## DecoBlock 10

A 10% active water-based siloxane/silane water repellent and impregnating agent for porous masonry surfaces such as concrete, block, brick and unglazed tile.

DecoBlock is an active water-based siloxane/silane water-repellent and impregnating agent for porous masonry surfaces such as concrete, block, brick, and unglazed tiles. DecoBlock will penetrate and chemically bond deep within the substrate to provide long-lasting protection against deterioration or staining due to water conditions. DecoBlock will not impair the natural breathing characteristics of treated substrates or produce a film. DecoBlock will help concrete and masonry surfaces resist common issues such as cracking, efflorescence, spalling, staining, and other damage caused by water intrusion.

## Color Boost

- An active silicone water-repellent and impregnating agent for porous masonry surfaces such as concrete, block, brick, and unglazed tile.
- Enhances colors without leaving gloss
- Does not make the surface any more slippery
- Best used to seal pea gravel exposed aggregate
- Designed to deeply penetrate the surface for maximum water repellency
- Low VOC-compliant formula
- Solvent and water-based options



# CURE & SEALS

## EasySpray 309

- VOC compliant, UV resistant, low viscosity 15% solids solvent based acrylic copolymer curing compound.
- Can be used as a means of dustproofing most concrete surfaces.
- Forms a moisture retentive film on freshly placed concrete.
- Meets ASTM C 309 specs.
- Coverage: 250 - 350 square feet per gallon.
- Available in 5 and 55 gallons.



## D-Guard WB 309

- A non-yellowing, water-based product designed for curing applications.
- A penetrating and breathable coating that provides a satin or low gloss finish to a multitude of interior and exterior horizontal or vertical concrete and masonry finishes.
- Self-cross linking, which provides better film formation, early water resistance, adhesion, toughness and outstanding efflorescence and alkali resistance.
- Available in 5 and 55 gallons.





## D-Guard Clear 25

- A VOC compliant, low viscosity 25% solids solvent based acrylic copolymer curing and sealing compound, as well as a dust-proofer for concrete surfaces.
- Offers improved resistance to rain, sun, freezing temperatures, stains, and other pollutants that sometimes can be hazardous to concrete.
- Forms a superior moisture retentive film on freshly placed concrete.
- When spraying D-Guard Clear 25 use a Chapin Xtreme Sprayer (19049, 19069, 19249 or 22049).
- Available in 5 and 55 gallons.

## D-Guard WB 25

- Low VOC, low odor, non-yellowing, water-based product designed for curing and sealing applications.
- Perfect for low ventilated areas where low VOC's and low odor are required.
- Non-yellowing formula assures product's superior resistance to the elements.
- Medium viscosity formula allows for easy application through sprayers.
- Superior efflorescence and alkali resistance compared to common solvent based acrylic sealers.
- Recommended for interior & exterior freshly placed, finished and aged concrete where a medium gloss water based curing and sealing compound is specified.
- Coverage: 250 - 350 square feet per gallon (New, Unsealed Concrete) & 350 - 400 square feet per gallon (Old, Sealed Concrete).
- Available in 5 and 55 gallons.



## Tee Jet Nozzle

The Deco-Crete Tee Jet Nozzle is a versatile and durable accessory for sprayers, designed to ensure even application of sealers, coatings, or other concrete products. Its precision-engineered design helps reduce overspray, saving time and materials on the job. Perfect for achieving a smooth and consistent finish.

# EXPOSED AGGREGATE

## DecoStone 30 - Browntone

- Solvent-based, brown tinted acrylic exposed aggregate sealer.
- High gloss.
- 350 VOC.
- Designed for application to pea gravel exposed aggregate.
- 200-300 square feet per gallon.
- Available in 5 and 55 gallons.



## Browntone Tint - Graytone Tint

- 1 pack per pail.
- For Diamond shine & Diamond shine 30.
- Browntone makes a translucent tinted sealer to accent the color of exposed pea gravel.
- Graytone makes a translucent tinted sealer to accent the color of exposed Limestone.
- 4 oz. bottle.

## Retarder-S

- A water soluble liquid specially formulated to retard the surface mortar of fresh concrete to expose aggregates in freshly placed concrete surfaces.
- Green in color to allow for easy identification of applied areas and to ensure appropriate uniform coverage.
- Should be used to achieve architectural color, texture, and appearance without mechanical means such as sandblasting.
- Available in 1, 5 and 55 gallons.

## Retarder-F

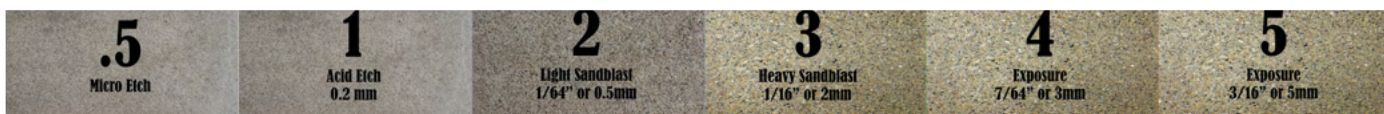
- A green water soluble gel that when applied on the surface of vertical freshly poured concrete retards the surface mortar to expose the aggregate.
- This leaves an architectural finish by exposing the color and texture of the natural aggregate.
- Coverage: 150 sq. ft. @ 1/8" per gallon.
- Available in 1, 5 and 55 gallons.



# EXPOSED AGGREGATE

## D-Activator

- Makes exposed aggregate finishes easier and more consistent.
  - It is typically applied to freshly-placed concrete to prevent cement paste hardening and achieve more controlled exposed aggregate finishes.
  - Unlike sugar-based retarders with uncertain levels of retardation, Deactivator selectively halts the hydration process down to a controlled depth.
  - 6 predetermined depths of exposure are available, color-coded for identification, to provide consistent, repeatable cement paste removal and aggregate reveal.
  - Deactivator provides a longer window before the surface paste must be removed, it allows underlying concrete to harden properly, locking in aggregate and reducing pop-outs.
  - Water-soluble for easy removal with high pressure water washing and scrubbing equipment.
  - Coverage: 150 square feet per gallon.
- White - Micro Etch
  - Violet - Acid Etch - .2mm
  - Light Blue - Light Sandblast - 1/64" or .5mm
  - Beige - Heavy Sandblast - 1/16" or 2mm
  - Blue - Exposure - 7/64" or 3mm
  - Pink - Exposure - 3/16" or 5mm



# CONCRETE STAIN

## Revival

- 20 Standard Colors matching Deco-Crete's Color Hardener and Integral Color Systems.
- Completely covers discolorations, stains, or other blemishes.
- Great for restoration work, on old or new concrete.
- MADE IN THE U.S.A.



Deco-Crete Revival is an opaque color coating that can be used to give a whole new look to any unsealed existing concrete surfaces. It will completely cover discolorations, stains, or any other blemishes that may be present. Revival may be used on interior or exterior, stamped, broomed, or swirl finished concrete along with other cementitious surfaces. It is formulated to match Deco-Crete's most popular Color Hardener and Integral Color Systems as well as a natural color similar to cured concrete.

**Also available in clear for topcoats on stamped concrete.**



### Covers up

- Blanket Marks
- Differential Curing
- Discolorations

### Fixes

- Color mistakes
- Faded colors



## Deco-Crete WB Concrete Stain

A translucent stain that allows you to create beautiful natural looking colors that will enhance the appearance of porous concrete slabs, concrete overlays, and vertical concrete.

- No acrylic additive allows for maximum penetration and long life.
- 22 Colors available.
- Translucent water-based concrete stain.

**Available in 4oz and 32oz**



## Concrete Acid Stain

- Penetrating Reactive Stain.
- Long-Lasting Effects.
- Dilute with Water.
- 11 colors available.
- Interior or Exterior Application.
- MADE IN THE U.S.A.

**Available in 1gal**



# CONCRETE COLORANTS

## Color Hardener

A colored dry-shake hardener that is hand-broadcast over fresh concrete and floated in to create a dense, colored surface. When paired with Deco-Crete Antique Release, it enhances texture. Made with high-quality, UV-resistant, streak-free iron oxide pigments for durability.



## COLOR HARDENER & RELEASE COLOR SELECTION GUIDE





## Antique Release

A dust-on powder used in stamping to prevent wet concrete from sticking to texture mats. It acts as a bond breaker, repels water, and doubles as a coloring agent, embedding darker shades into textured surfaces. Made with UV-resistant, streak-free iron oxide pigments, it is applied using a release brush.



## Release Brush

- Designed for consistent release powder application.
- Ensures even coverage on textured concrete surfaces.
- Durable construction for long-lasting use.
- Enhances stamped concrete texture and detail.



## Texture Enhancer

Deco-Crete Texture Enhancer is a blend of pigments, cement, and agents designed to accentuate the texture of stamped or textured concrete. When mixed with water, it settles into low areas to highlight surfaces. It can be sprayed or brush-applied, offering control over the amount of accent color. Suitable for both new and old concrete, it is color-matched to Deco-Crete Antique release agents.



# CONCRETE COLORANTS

## Yard Pack

A pre-packaged, non-fading, streak-free integral coloring system for ready mix concrete that meets ASTM Standard C979. Designed as a one bag per cubic yard color system made for 6 sack or 4,000psi ready-mix concrete.



## Mini Yard Pack

The Deco-Crete Mini Yard Pack System™ is a convenient, pre-measured color system for gray cementitious overlays and concrete countertops. Each pack ensures consistent, UV-stable color without the hassle of measuring. Compatible with Deco-Crete overlays and the DuraCast GFRC System™, it offers 30 color options and matches Deco-Crete's Yard Pack™ and Granular Color System.



# CONCRETE COLORANTS



## Granular Color

- Customizable color formulas.
- Distributes color evenly.
- Less mess than hardeners.
- Water-soluble bags.
- Easier to handle and store.

## Fast 5 to 20

- Create 20 custom colors from 5 base colors.
- 10 lb. water-soluble bags make it easy to use.
- Simplified system for mixing colors.
- Reduces storage needs with fewer base color.



Fast 5 to 20 Sample Case



Yard Pack Sample Case



CH/AR Sample Case

# SOLVENTS & CLEANERS

Raw solvents are used in various industries. Solvent Retarders, Xylene, and Acetone are designed for use in the paint and coatings manufacturing process. These solvents can be used for multiple reasons, such as paint and coating, clean-up for tools and accessories, and re-emulsification needs to fix faulty applications/conditions.



## Dimethyl Carbonate “DMC”

- Use to clean up and fix many common issues associated with solvent-based sealers.
- Slower drying formula
- 1, 5, and 55 gallons
- Coverage: Varies



## Acetone

- Use Acetone for mixing with *Armour Dye and Polishing Dye™* and for clean-up.
- Available in 1, 5, and 55 gallons
- Coverage: Varies



## Xylene

- Xylene can be used for clean-up and fixing many issues common with solvent-based sealers.
- Available in 1, 5, and 55 gallons.
- Coverage: Varies



## Strip-Off

- Roll-on biodegradable paint remover.
- Removes durable industrial coatings like urethanes and epoxies.
- User-friendly and non-flammable formula.
- Environmentally friendly and does not deplete the ozone.
- Zero VOC product, with no carcinogens.



## Citrus Degreaser

- Concentrated, biodegradable, heavy-duty formulation.
- Can be diluted up to 1:10 using clean water.
- Citrus-based concrete degreaser.
- Quickly dissolves most kinds of grease and motor oil.
- Coverage: Varies



## Concrete Cleaner

- No harsh odors.
- Safe for use with scrubbing machines.
- Excellent cleaning agent for daily mopping of sealed or coated surfaces.
- VOC compliant for all areas in the USA and Canada.
- Coverage: Varies

# SOLVENTS & CLEANERS



## Denatured Alcohol

- Excellent for thinning solvent based products
- Dry time varies for different applications.
- Superior cleaning properties for solvent based applications.



## Deco-Prep

- No harsh odors.
- Acid-based micro etching solution.
- Allows for enhanced acid staining color development.
- Safe replacement to muriatic acid.
- Coverage: 150 - 250 square feet per gallon.
- Size: 1-gallon jug



## Liquid NCA

- Non-chloride, water-reducing, and accelerating admixture.
- 10-45 fluid ounces per 100lbs of cement.
- Helps protect from freezing.
- Safe for use with colored concrete.
- Ideal for when calcium chloride is prohibited.



## Lithium Silicate

- VOC-free lithium silicate concrete floor densifier, hardener, and sealer.
- environmentally friendly.
- Creates a permanent, glossy, dust-proof finish.
- Effective on both new and old concrete surfaces.
- UV-stable, abrasion-resistant.



## Polishing Guard

- Contains high amounts of Lithium that combats surface ASR.
- Low odor.
- UV stable and breathable.
- Will not peel, flake, or discolor.
- Provides superior sheen.
- Resistance to abrasions



## Rust Remover

- Excellent cleaning agent for daily mopping of sealed or coated surfaces.
- Concentrated solution can be diluted up to 1:3 with water.
- Safer solution that releases less fumes than similar products.
- Removes most rust stains on concrete, pavers, masonry brick, and block.
- Coverage: 100 - 200 square feet per gallon.
- Size: 1-gallon jug

# EXTRAS & ADDITIVES



## Easy Strip

Use on forming surfaces to help in the removal of the forms after the concrete has hardened. Can be used on plywood, wood, aluminum and steel forms as well as most types of form liners.

- Does not stain
- Reduces build up
- Helps minimize surface holes

## Slab Saver

Extends concrete's workable time in tough conditions, preventing surface weakness. It improves finishing, reduces evaporation, and strengthens concrete, making it more durable and resistant to dusting and slab curling.

- Easy Finishing
- Ready-To-Use formula
- Great for dry shake color hardeners
- Creates a denser & durable surface



## Crete Blast

- Organic, biodegradable concrete debonding agent and remover.
- Non-flammable, non-combustible, non-corrosive, not hazardous.
- Perfect for concrete debonding and removal on trucks, mixers, tools, saws, and finishing machines.
- Coverage: Varies
- Size: 1-gallon jug



## Deco-Film

Highly concentrated water-based evaporation retardant for use on all types of concrete surfaces.

- Prevents rapid moisture loss caused by warm, windy or dry conditions and working in direct sun light
- Reduces stickiness, cracking, plastic shrinkage, wind crusting and sponginess which can result in a poor finished appearance



## Super Flow

A polycarboxylate-based high-range water-reducing admixture for producing concrete with very low water-to-cement ratios.

- Great for wet cast & GFRG countertops
- Aids in concrete placement and reduces labor cost
- Improved air stability characteristics
- Produces flowing concrete with quicker stripping strengths



# BAG MIXES



## Trowel Overlay

- Designed to resurface plain gray concrete.
- Broomed, sprayed, or trowel textured.
- Interior or Exterior
- Long-Term Bond
- Includes 30 integral color options.
- Stainable with Acid or Water-Based Stains

Available in Gray or White



## Stamp Overlay

- Includes 30 integral color options.
- Highly-Durable
- Unlimited Design Options
- Interior or Exterior
- Stainable with Acid or Water-Based Stains
- Long-Term Bond

Available in Gray or White



## Sure Bond

An acrylic polymer admixture resin enhances cement-based products by providing superior adhesion and water resistance for both interior and exterior use. Its high solids content is dilutable for versatile applications and exceeds ASTM C-1059 91 strength standards. Ideal for priming surfaces before applying self-levelers like Flat Top or patch materials like Easy Patch, this formula ensures exceptional bonding and durability.



## Easy Patch

- One-component, polymer-modified mortar.
- Can be applied up to 1.5" thick.
- Can be used on horizontal, vertical, or overhead surfaces.
- Sets in 20-30 minutes.
- High-strength, durable composition.
- Suitable for both DIY and professional use.



## Kirtbag Carving Mix

An "ad-pac" used to convert 80lb. bag of standard Type S Mortar into a high performance vertical carving mix. Can be used for interior or exterior applications without any modifications.

## Vertical Mix

- Polymer-modified cement mix for vertical overlays.
- Suitable for concrete, drywall, styrofoam, plywood, and masonry.
- Works on Interior and exterior surfaces.
- Ideal for hand carving or vertical stamping.
- Great for staining to create realistic textures.



## Flat Top

- Applied from featheredge to 1" thick in one application
- Polymer modified
- No troweling - self leveling
- Pumpable
- One component - just add water
- Portland cement based
- Short wait for foot traffic



## Micro-Topping

- Long-Term Bond
- Interior or Exterior
- 30 Integral Colors Available
- Highly Durable
- Broomed, Trowel, or Spray Textured Surfaces
- Unlimited Design Options

Available in Gray or White

## Deco-Crete 5000

- Includes 3/8" aggregate and flow agents
- High performance - technical grade
- High flow - long pouring time
- Shrinkage compensated
- Portland cement base
- Use with Tru-Pac C to create a concrete counter-top mix



## Duracast System

Deco-Crete's DuraCast GFRC System™ is a versatile, cementitious blend designed for both structural and detailed applications. When mixed with DuraCast Modifier, it forms a durable layer suitable for hand-packing or spraying on horizontal and vertical surfaces. The system also includes a thin-layer mix for precise mold detailing, perfect for casting upside down. DuraCast Modifier enhances strength, reduces cracking, eliminates the need for a seven-day wet cure, and allows demolding in just 24 hours. With 30 color options, it offers creative freedom at half the weight and thickness of traditional concrete.





\*Stamp Overlay  
\*Rustic Barnwood Stamp

# LIQUID METALS

HIGH PERFORMANCE COATING SYSTEMS

## ELECTRIC EPOXY

### Rockin' Benefits

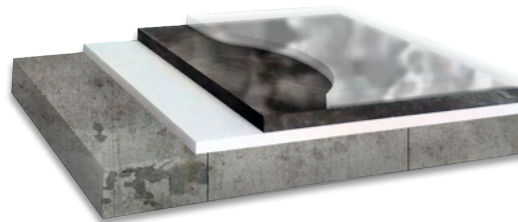
- 100% epoxy formulation means extreme durability
- Seamless flooring with no grout lines
- Easy to clean and maintain
- Limitless color pairing options
- Base coat 150 square feet per gallon
- Metallic coat 75 square feet per gallon
- Mix Ratio: 2A - 1B
- Sizes: 3-gallon and 15-gallon kits

### Ideal Applications:

- Retail Stores
- Living Spaces
- Office Buildings
- Showroom Floors
- Dealership Showrooms
- Restaurants
- Anywhere a highly durable floor is needed!



8 oz. by weight to be mixed with 3-gallon kit of Electric Epoxy.



1. Prepped Concrete
2. Base Coat
3. Metallic Coat
4. Clear Top Coat

\* Base coat of black or white



The color samples above are representations only. Test prior to use.





HIGH PERFORMANCE **COATING SYSTEMS**

## URETHANES

### Rock Hard Urethane

Rock Hard Urethane will outperform any similar competitor product.



- EASY TO USE
- Low odor formulation
- 85% solids, low VOC, solvent based urethane
- No mixing - single component
- Premium hardness and chemical resistance
- Superior leveling, gloss, and UV-stability
- Size: 1-gallon jug



### WB Matte Urethane



- High solids, matte finish, two-component, water-based aliphatic polyurethane.
- Excellent hardness, abrasion, hot tire, and chemical resistance
- Low VOC, and low odor with multiple uses
- Size: 3-gallon kit
- Mix Ratio 2A - 1B
- Coverage: 200 - 300 square feet per gallon



### Gloss WB Urethane



- High solids, high gloss finish
- Two-component water based aliphatic polyurethane.
- Excellent hardness, abrasion, hot tire, and chemical resistance
- Low VOC, and low odor with multiple uses
- Size: 2.5-gallon kit
- Mix Ratio 4A - 1B
- Coverage: 200 - 300 square feet per gallon



HIGH PERFORMANCE **COATING SYSTEMS**

## **CRACK REPAIR**

### Quik Fix Filler

- Rapid set time allows for minimal down time allowing the user to offer quick return to service.
- Works well even in cold climate applications.
- Ultra low viscosity formula for easy application
- Coverage varies per application
- Sizes: 1-gallon and 2-gallon kits
- Mix Ratio: 1A - 1B



### Epoxy Accelerator

An accelerant additive that speeds up the cure rate of both pigmented and clear epoxies.



## COMMERCIAL & INDUSTRIAL RESINOUS FLOORING

# POLY ARMOUR

## HIGH PERFORMANCE COATING SYSTEMS

The quickest, most immediate way to create an attractive yet durable floor in most situations. Solid color or broadcast, it's the preferred choice of contractors for saving time and labor while providing that sought after combination of strength and beauty.



### Poly Armour Clear 90

- Low-odor formula
- Longer pot life
- Crystal-clear high performance sealer
- Incredible durability compared to others
- Excellent abrasion and chemical resistance

\*90 - 200 - 300 ft<sup>2</sup> per gallon\*

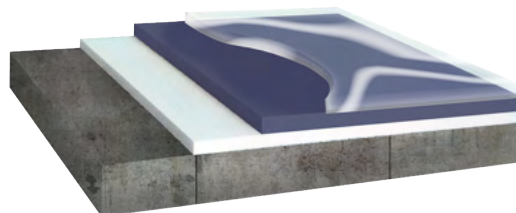
### Poly Armour Clear 70

- Crystal clear high performance sealer
- Durability unrivaled by other top coats
- Excellent abrasion and chemical Resistance
- Low temperature installation

\*70 - 200 - 300 ft<sup>2</sup> per gallon\*

### POLY ARMOUR Advantages:

- One day installation
- Next day return to service
- Superior stain and chemical resistance
- UV-stable, non-yellowing formulation
- No VOC and odor free applications available
- Mix Ratio: 1A - 1B
- Extreme durability
- Low temperature cure
- No pick up from hot tires
- Available in 2-gallon or 10-gallon kits



1. Prepped Concrete
2. Prime Coat
3. Base Coat
4. Top Coat

# POLY ARMOUR

## SHORT FILLED 90, 70

### Short Filled Kit

- It provides ultimate abrasion, impact, and wear resistance, far exceeding many other applications.
- In most cases, the entire application can be accomplished in just one day.
- Excellent penetrating and bonding capabilities provide many years of durability.
- It is highly economical considering the days of labor that can be saved by using a one-day application.
- Armour Tint is designed to be mixed into Poly Armour Part A.
- Sizes: 1.75-gallon or 8.75-gallon kits

### Armour Tint

- Color Pack for Deco-Crete Poly Armour Short-Filled Kit
- A high solids, concentrated, solvent-based tinting system specially formulated for Deco-Crete Poly Armour.
- The superior choice for obtaining semi-transparent stains or solid opaque-colored finishes.
- Mixes into Part A of the Deco-Crete Poly Armour Short-Filled Kit
- 15 popular colors for every kind of application.



Armour Tint Sold Separately \*70: - 200 - 300 square feet per gallon\*  
 \*90: - 200 - 300 square feet per gallon\*

\*No VOC and odor free options available



The color samples above are representations only. Test prior to use.

# POLY ARMOUR



## Poly Armour 100 & 100 Short Filled

- A 100% solids, two component polyaspartic aliphatic polyurea utilizing innovative proprietary nanotechnology.
- Provides ultimate abrasion, impact & wear resistance.
- Entire application can be accomplished in just one day.
- It's excellent penetrating & bonding capabilities provide many years of durability.
- Highly economical considering the days of labor that can be saved by using a one day application.



## Poly Armour 80 Slow Cure

- A 80% solids, slow cure, two component polyaspartic aliphatic polyurea utilizing innovative proprietary nanotechnology.
- It provides a high gloss clear coating.
- Excellent long term wear.
- Slower dry time provides more working time.
- UV stability allows this to be used in areas saturated by the sun throughout the day



## Polyaspartic 90 Standard & Slow Set

- A two-component, short working time, abrasion, chemical, & stain-resistant polyaspartic.
- High Solids, High Performance, UV Stable and Clear Gloss.
- Resistant to Skydrol, betadine and conventional hot-tire staining.
- Used as an upgraded topcoat on Deco-Crete resinous flooring systems.
- Can be applied directly over Moisture Shield Primer.



# POLY ARMOUR

## 100% EPOXY

### 100 Epoxy

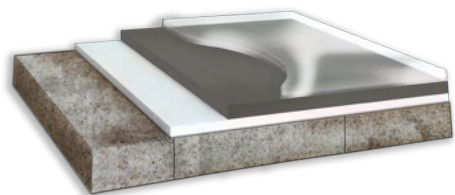
- 100% solids, two-component cyclo-aliphatic amine epoxy system with excellent durability, including abrasion, chemical, and hot tire resistance.
- User-friendly high-performance concrete flooring system.
- Designed for a variety of seamless high-build concrete flooring applications
- It is an excellent coating for auto service centers, warehouses, computer rooms, laboratories, aircraft hangars, cafeterias, exterior tanks, and other areas where high performance, abrasion resistance, and chemical resistance are required.
- Excellent coating choice for interior decorative concrete
- Available Packaging: 3-gallon and 15-gallon kits
- Mix Ratio: 2A - 1B



COVERAGE RATE: 75 - 125 square feet per gallon\*

### 100 Epoxy Tint

- A high solids, concentrated, solvent-based tint system specially formulated for Deco-Crete Poly Armour 100 Epoxy.
- The superior choice for obtaining semi-transparent stains or solid opaque-colored finishes.
- Mixes into Part A of Deco-Crete Poly Armour 100 Epoxy



4. Top Coat  
3. Tint Coat  
2. Base Coat  
1. Concrete

\*No VOC and odor free available



The color samples above are representations only. Test prior to use.

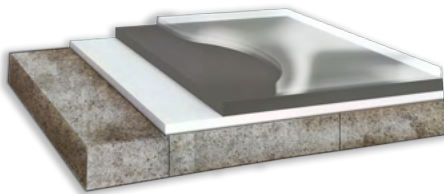
# POLY ARMOUR

---

## PRIMER

### Moisture Shield

- A high-performance epoxy primer system designed to reduce water vapor transmission.
- Superior adhesion for concrete affected by moisture vapor transmission.
- Excellent base coat for many epoxies and urethanes
- Performs well where other coatings fail
- Size: 3-gallon kit
- Mix Ratio: 2A -1B



4. Top Coat
3. Base Coat
2. Prime Coat
1. Concrete



### WB Epoxy

Specially formulated, low-odor, two-component, water-based epoxy primer for interior use. This product provides excellent substrate penetration and is a suitable primer for most epoxies, urethanes, polyureas, and polyaspartic polyureas.

COVERAGE RATE: 200 - 250 square feet per gallon\*  
when applied at 6- 8 mils



COVERAGE RATE: 200 - 300 square feet per gallon\*  
when applied at 2 - 3 mils

- Low viscosity allows for excellent substrate wetting and penetration.
- Provides superior bond to concrete, making it an ideal primer for many other coatings.
- Fast cure times and low odor make this a concrete contractor's favorite primer.
- Works well as a stand-alone, clear epoxy for interior applications.
- Size: 2-gallon kit
- Mix Ratio: 1A - 1B

# POLY ARMOUR

---

## SPECIALTY PRODUCTS



### Floor Flex

- A single-component flexible waterproofing membrane that creates a seamless isolation barrier over wood and concrete surfaces.
- Can be used as a stand-alone or a flexible underlayment for Deco-Crete coatings and overlays.
- Packaging Size: 5-gallon pail



### Supreme Clear 100

- Ultra clear, self-leveling countertop epoxy.
- Ideal for countertops and specialty projects.
- Designed for high-build applications where clarity is key.
- Mix Ratio: 2A - 1B
- Packaging Size: 1.5-gallon kit



Coverage Varies

# POLY ARMOUR

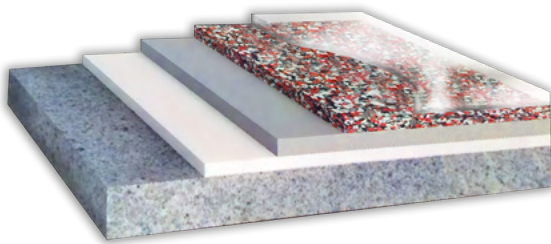
---

## BROADCAST MEDIA



### Armour Chips

- Vinyl chips and premium mica blends
- An individual terrazzo style finish that affords owners reduced upkeep with continuing durability.
- Preferred in retail locations, schools, and residential garages
- Covers approximately 200 - 250 square feet
- No VOC and odor-free formulations available
- Packing: 40 lb. box



5. Top Coat
4. Chips
3. Base Coat
2. Prime Coat
1. Concrete

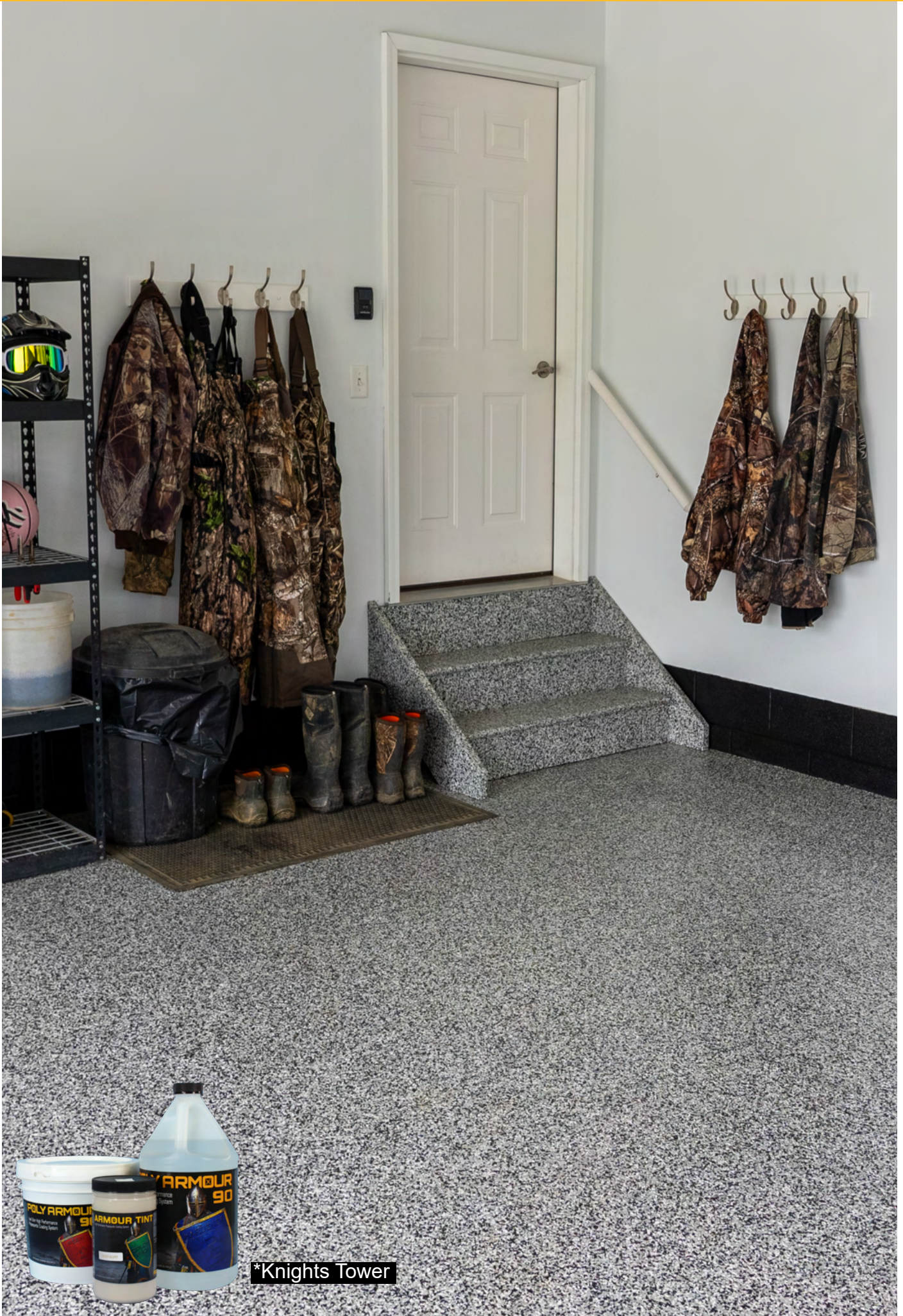


### Quartz Blend



- Composed of the finest uniformly shaped and sized quartz granules.
- This unique product is brilliantly color-coated with a superior resin system and high-quality colorfast pigments to provide optimal durability and extreme performance in the most demanding environments.
- In addition to their superior resilience to harsh chemicals and UV rays, Colored Quartz Aggregates can be applied to achieve many different textures and levels of slip resistance.
- Packaging: 50 lb. bag

# POLY ARMOUR



\*Knights Tower

# POLY ARMOUR

---

## DYE & ADDITIVES



### Armour Dye

A translucent, UV-stable dye formulated using color designed to penetrate exterior and interior cementitious surfaces.

- Used for creating the look of a beautiful, custom acid-stained floor in only 1/3 of the time.
- Available in 0.5-gallon or 2-gallon concentrated containers.
- Coverage: 400 - 600 square feet per gallon.



### Polishing Dye

A translucent dye, designed to penetrate and color interior cementitious surfaces, including polished concrete.

### Penetrating Agent

- Improves Armour Dye penetration and mottle effect.
  - Excellent for high-temperature applications
  - Helps minimize material waste and surface residue.
- 20-ounce bottle (1 ounce per quart of stain, 4 ounces per gallon of stain, and 20 oz per 5 gallons of stain)



---

### Aluminum Oxide 220 Grit

Introducing our innovative topcoat additive, perfect for Rock Hard Urethane and Poly Armour Coatings. This specially formulated additive not only turns a glossy finish into a sleek matte finish but also provides additional strength to the coating.

Our additive is designed to enhance the aesthetics and durability of your surface, making it more resistant to wear and tear. Because it goes down thin, you can cover a more extensive square footage with only your topcoat, saving you time and money on your project.

This topcoat additive is perfect for both residential and commercial projects where a durable, modern look is desired. Its superior strength and matte finish make it ideal for achieving a long-lasting and attractive surface.



### Armour Grip

- Anti-skid coating additive
- Provides superior slip resistance
- Great for sealers, urethanes, and epoxies
- Available in 40, 60, or 100-grit
- Size: 1-pint container



# COUNTERTOP SEALER KITS

## Rock Top WB



- Clear gloss finish, water-based urethane
- Two-component formulation
- Low VOC, low odor complete concrete countertop sealer
- Excellent hardness, abrasion and chemical resistance
- Package Size: 40 oz.
- Includes Base A, Activator B, Pail, and Instruction Sheet



## Rock Top WB Matte

- Clear matte finish, water-based urethane
- Two-component formula
- Excellent hardness, abrasion and chemical resistance
- Low VOC, low odor complete concrete countertop sealer
- Kit Size: 24 oz.
- Includes: Base A, Activator B, Mixing Cup, Pail and Instruction Sheet





# DecoCRETE

**CONCRETE** is hard enough the way it is.  
Finding the **SUPPORT** you need shouldn't be.

[WWW.DECO-CRETESUPPLY.COM](http://WWW.DECO-CRETESUPPLY.COM)

